

ST. COLUMBKILLE

CATHOLIC CHURCH

Helping Everyone Take Their Next Step to be More Like Jesus



A Prayer of St. Columbkille

The path I walk, Christ walks it.
May the land in which I am, be without sorrow.

May the Trinity protect me wherever I stay,
Father, Son, and Holy Spirit.

Bright angels, walk with me dear presence,
in every dealing.

May I arrive at every place, may I return home.
May the way in which I spend be without loss.
May every path before me be smooth.
May every man, woman, and child welcome me.

A truly good journey!
Well does the fair Lord show us
a course, a path.



MAINTENANCE *FOR* MISSION:

*Honor the past, repair the
present, preserve the future*

INTRODUCTION

From 1878 to the present day...

More than 100 years of scholars & saints

INTRODUCTION

Parish Leadership

Father Tom Greisen, Pastor, 402.339.3285
Father Patrick Moser, Associate Pastor, 402.339.3285
Nicole Cook, Director of Mission, 402.339.0990
Phil Lenz, Director of Operations, 402.592.8494
Brandi Redburn, School Principal, 402.339.8706
Kara Wesely, Director of Development, 402.339.3285

Finance Council

Travis Clark
Gail DeBoer
Andrea Heffelfinger
Matt Herting
Robin McCoy
Carrie Molczyk
Patrick Morrison
Charles Stiegemeier



Pastoral Council

Mike Anthofer
Jen Benson
Steve Campie
Brad Carpenter
Hans Dethlefs
Victor Garza
Brian Newton
Kathy Rains
Andy Stewart
Jeremy Stukenholtz
Morgan Vogel
Rosemary Willis

Development Council

Jen Benson
Suzanne Brown
Brad Carpenter
David Drozd
Terri English
Mitchell Godfrey
Deacon Dave Graef
Dan Grzywa
Joe Kueper
Linda Kueper
Mary Lyn Loeffler
Doug McWilliams
Brandi Redburn
Morgan Vogel

FIRST PRIORITY

Cost: *\$500,000*

Timeframe: *Next 12 Months*

FIRST PRIORITY PROJECTS

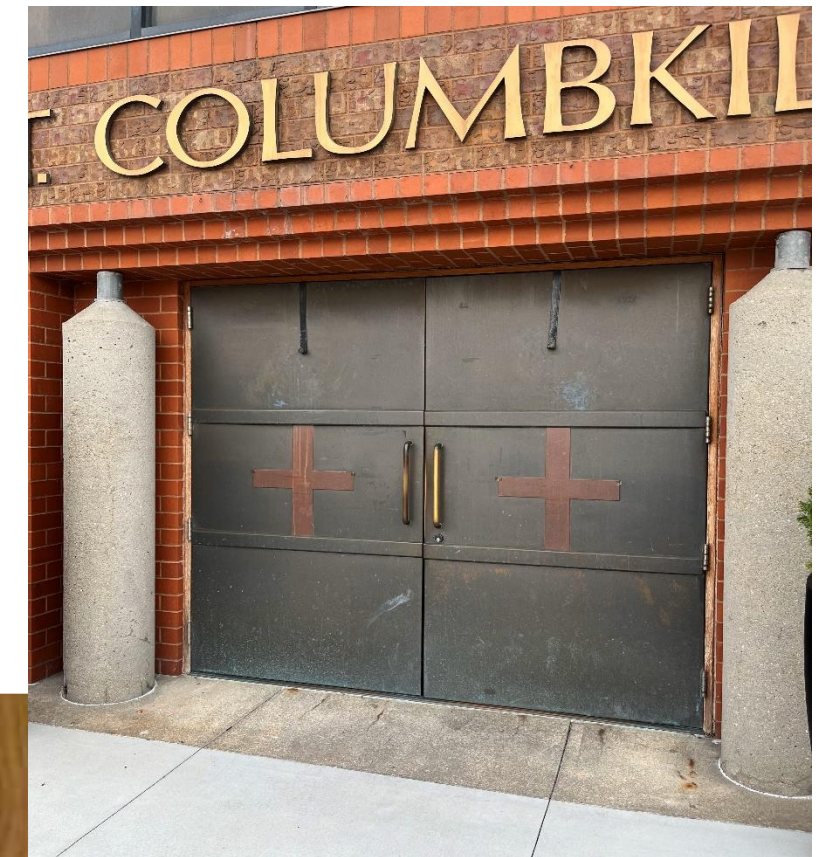


**Church South Wall
Brick Repair**

- Estimated Cost \$66K

- Repairs necessary to maintain the structural integrity of the church

- Cost reflects the increased expenses for masonry work and materials



Church Main Door

- Estimated Cost \$6K (Frame Only)

- Doors do not close properly

- Repaired numerous times, it needs to be replaced

FIRST PRIORITY PROJECTS



**Sacred Heart Center
Flooring**

- Estimated Cost: \$14K*
- Installed: 2012
- The floor was replaced in August 2024 to maintain a welcoming environment.
- Flooring was cleaned regularly and portions were replaced as needed. However, due to heavy use, the carpet was severely stained.

*Floor replaced, final invoice pending.

FIRST PRIORITY PROJECTS



School Air Conditioning Replacement



- Estimated Cost: \$435K
- Installed: 1997-2004 (20-26 years old)
- 2 out of 3 school units have exceeded industry standard life expectancy. Many parts are more than 20 years old.
- One unit was replaced in July 2024; the last of the 3 original units that need to be replaced are part of the school addition completed in 1997.
- For locations of the units see the map on the next slide.

First Priority

Location map for
air conditioning
units.

St. Columbkille School

- Original Bldg
- 1990 Addition
- 1997 Addition
- 2019 MPC



SECOND PRIORITY

Cost: *\$400,000*

Timeframe: *Next 12 -18 Months*

SECOND PRIORITY PROJECTS



**Church Pew Cushions
and Kneelers
& Chair Cushions**

- Estimated Cost: \$130K
 - Pew cushions: \$90K
 - Kneelers: \$30K
 - Chair cushions: \$10K
- Installed: 2009-2014
- Pew and Chair cushions are worn out, stained, and wrinkled.
- Current pews are veneer and have been affected by cleaning chemicals. Cannot be refinished.

*** Option: New pews and chairs (solid wood) with cushions and kneelers \$315K.**

SECOND PRIORITY PROJECTS



Church Carpet Replacement

- Estimated Cost \$45K
- Installed: 2011
- Stained in several areas and can no longer be adequately cleaned.
- If pews are updated, it is the ideal time to change the carpet.



School Heating Systems

- Estimated Cost \$200K
- Installed: 1997
- Replace 3 boilers and heat regulators.



SECOND PRIORITY PROJECTS



**Concrete Repairs at the
Rectories and School Campus**



- Estimated Cost: \$25K
- Concrete is cracked and buckling in several areas.
- Catholic Mutual has identified several areas as safety hazards during the past several inspections.

THIRD PRIORITY

Cost: *\$510,000*

Timeframe: *Next 18-36 Months*

THIRD PRIORITY PROJECTS



Church Furnaces

- Estimated Cost \$60K
- Installed: 1998 (25 yrs)
- Expected useful life is 25 yrs.
- Furnaces are in good condition based on recent inspection.
- We need to budget for replacement given they have reached the end of their life expectancy



School Air Conditioning Replacement





- Estimated Cost \$90K
- Installed: 2012-2013 (11-12 yrs)
- Remaining 4 AC units, not previously addressed on the original school bldg.
- We need to budget for replacement given they will reach the end of their life expectancy in 2026
- For a unit location map, see the next slide.



Third Priority

Location map for
air conditioning
units.

St. Columbkille School

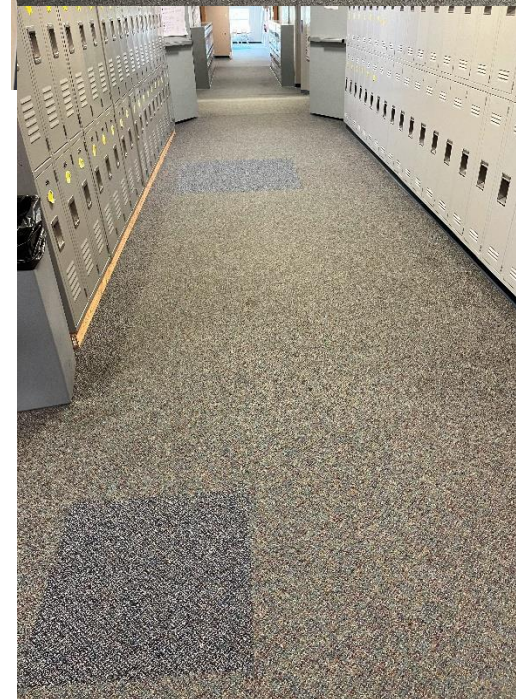
-  Original Bldg
-  1990 Addition
-  1997 Addition
-  2019 MPC



THIRD PRIORITY PROJECTS



School Lights, Ceiling Tiles and Carpeting



- Estimated Cost: \$315K
- Installed: Lights & Ceiling Tiles 2003 (21 yrs); Carpeting 2008 (16 yrs)
- Ceiling and lighting would be best if done together. Upgraded LED lighting would be beneficial for all areas.
- Carpet has been cleaned and replaced as needed, however with heavy use, needs to be replaced.

THIRD PRIORITY PROJECTS

School Playground



- Estimated Cost: \$50K
- Installed: 2020
- Deteriorating playground surfaces.
- Catholic Mutual identified as a safety risk that needs repair/replacement.
- The perimeter around the playground is deteriorating and eroding.

INCREASED OPERATING EXPENSES

- **Over the past five years, due to the rising costs of goods & services...**
 - **Parish expenses outpaced income (tithing & tuition) by \$668,000 or 13%**
 - **Through your generosity, tithing increased \$308,000, but unfortunately did not keep pace with inflation**

MAINTENANCE *FOR* MISSION PHASES 1 - 3

Phase 1 – invite our key stakeholders to attend an in-person event

Phase 2 – parish-wide invitation at masses on October 12th & 13th

Phase 3 – ongoing outreach to all parishioners, regular updates regarding project status and goals

WAYS TO GIVE

Gifts can be made in a variety of ways:

- **A one-time, lump sum payment**
- **A pledge over two years**
- **A monthly pledge over 1 to 2 years**

CONSIDERATIONS

- Please consider supporting Maintenance *for* Mission and maintaining your regular tithing contributions.

CONSIDERATIONS

- If possible, please make your pledge prior to October 12th & 13th.
- Doing so will allow us to share total dollars pledges during October 12th & 13th Masses, allowing all parishioners to see the collective impact and build off the momentum of your generosity



Pledge Form



Donate

CONSIDERATIONS

Gift Table:

- If we secure the specified number of parishioner gifts at each level, we will reach our goal of \$1.5 million
- Please review to determine where you may fit

Gift Amount	Number of Gifts	Subtotal
\$100,000	1	\$100,000
\$50,000	3	\$150,000
\$25,000	6	\$150,000
\$10,000	10	\$100,000
\$2,500	400	\$1,000,000
Total	420	\$1,500,000

WAYS TO SUPPORT



- Refer to page 10 in your Maintenance for Mission booklet for an entire list of giving methods
- Questions? Contact Kara Wesely at 402.339.3285 or kwesely@saintcolumbkille.org



*BREAKING
NEWS*

** St. C Times **

*SPECIAL
EDITION*

AIR CONDITIONERS BREAK, FORCING PASTOR TO GET HVAC LICENSE



HELPING EVERYONE TAKE THEIR NEXT STEP TO BE MORE LIKE JESUS

ST. C TIMES * ST. C TIMES * ST. C TIMES



PERSONAL JOURNEY

Helping everyone take their next step
to be more like Jesus



ST. COLUMBKILLE

CATHOLIC CHURCH

Helping Everyone Take Their Next Step to be More Like Jesus



CLOSING SONG

MINISTRY & MISSION/GOOD FRIDAY (READINGS SECTION)

560

THE SERVANT SONG

Capo 1: (D)
Eb

(G) (D) (Bm) (Em7) (A)
Ab Eb Cm Fm7 Bb



- 1, 6. Will you let me be your ser - vant, Let me be as Christ to you;
2. We are pil - grims on a jour - ney, We are trav - 'lers on the road;
3. I will hold the Christ - light for you In the night - time of your fear;
4. I will weep when you are weep - ing; When you laugh I'll laugh with you.
5. When we sing to God in heav - en We shall find such har - mo - ny,

(G) (A7/E) (D) (G) (D) (Em) (G) (A7) (D)
Ab Bb7/F Eb Ab Eb Fm Ab Bb7 Eb



- 1, 6. Pray that I may have the grace to Let you be my ser - vant, too.
2. We are here to help each oth - er Walk the mile and bear the load.
3. I will hold my hand out to you, Speak the peace you long to hear.
4. I will share your joy and sor - row 'Til we've seen this jour - ney through.
5. Born of all we've known to - geth - er Of Christ's love and ag - o - ny.